

CERTIFICATE OF LOCATION OF GOVERNMENT CORNER

NORTH QUARTER Corner of Section 28, Township 108 N., Range 40 W., 5th P.M.

STATE OF MINNESOTA, County of MURRAY

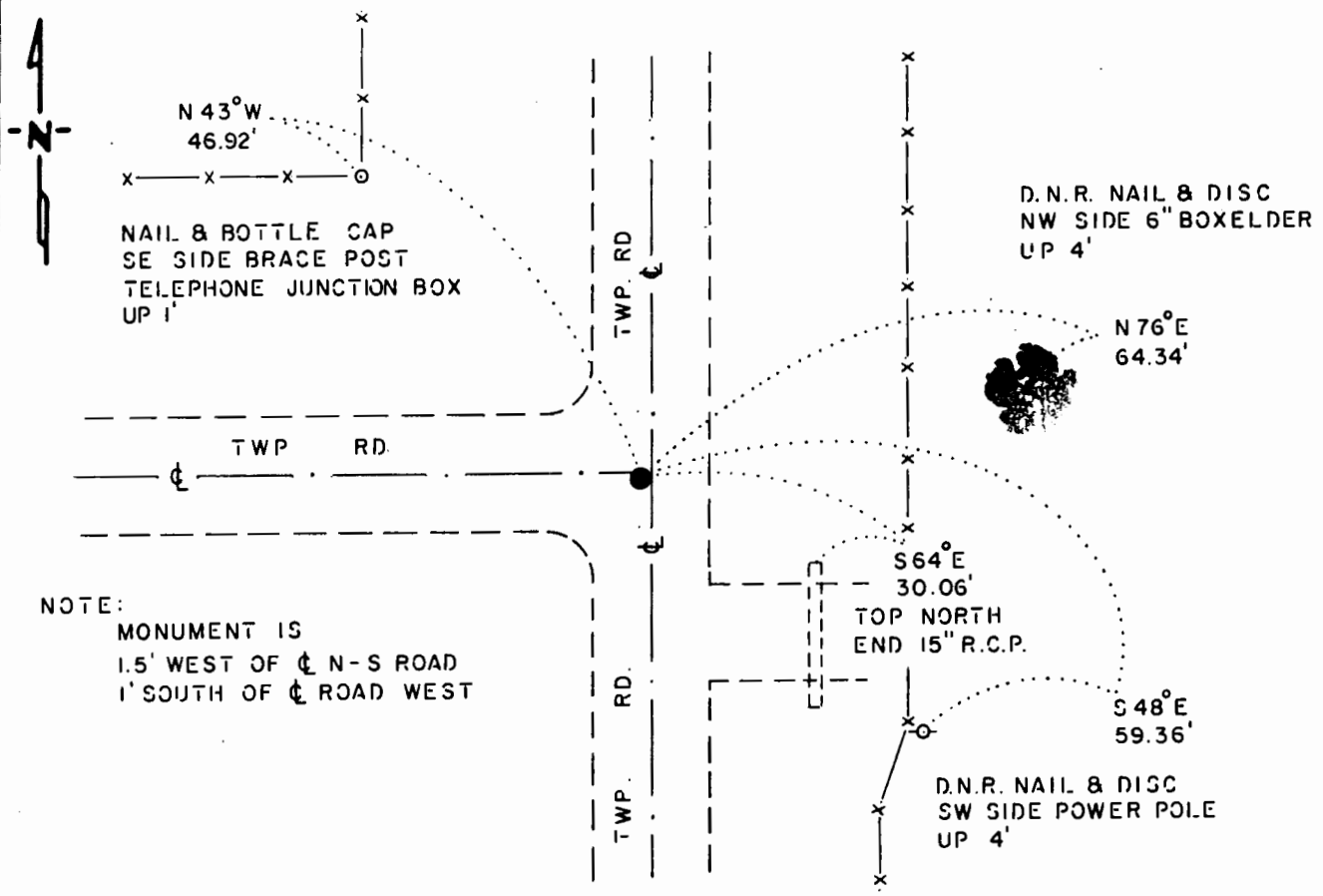
At the corner location shown on the sketch:

On 12-24-84 found a 15"x15"x12" STONE, DOWN 12"
DATE

left monument as found, lowered monument, removed monument (explain)

On 12-24-84 placed a 1 1/4"x1 1/4"x 8" PERFORATED STEEL TUBE WITH
DATE
ALUMINUM CAP STAMPED "D.N.R. SURVEY MARKER", OVER STONE, DOWN 0.4'

SKETCH OF REFERENCE TIES



NOTE:
MONUMENT IS
1.5' WEST OF ϕ N-S ROAD
1' SOUTH OF ϕ ROAD WEST

BEARINGS OBSERVED WITH COMPASS

Statement of evidence relative to this corner location is on back of page.

J. B. M. 7-18-85
G-361

I hereby certify that this document and the data contained herein was prepared by me or under my direct supervision.

Lawell R. Pomeroy 7-22-85
SIGNATURE DATE

Registration No. 17005
 Land Surveyor, Professional Engineer
 County Surveyor, County Engineer

OFFICE OF THE COUNTY RECORDER 172137
County of Murray

I hereby certify that this document was filed in the Co. Recorders office at 10 .M. on the 30th day of July A.D., 1985

County Recorder William J. Stone

By _____, Deputy

DOCUMENT NO. 172137

North Quarter Corner Section 28, Township 108 North, Range 40 West

This corner was originally established by the U. S. General Land Office survey in 1861. The government notes show corner marked with a wood post set in mound of earth with pits and trench dug around the mound.

In October 1984, the DNR Bureau of Engineering contacted the Murray County Offices of the Recorder and Highway Engineer for corner information.

The following information was obtained from the County Recorder's Office: Surveyor's Record Book A, on Page 11, contains a survey in Section 28. A statement by J.W. Woolstencroft, date not indicated, tells of a survey of a road on the north-south quarter line of Section 28. In 1934, F. A. March shows a stone at the corner. On June 16, 1952, M. E. Koopman took these ties to a stone at the corner:

Light pole, 41.7 feet, east
Telephone pole, 46.5 feet, northwest

In July 1966, the DNR Bureau of Engineering contracted N. C. Hoium and Associates, Inc. to do a survey in Section 28. In the course of that work this corner was found as a stone with an "x" on the top. A sketch of the corner shows it to be at the intersection of roads north-south and west with the following ties.

nail and washer in telephone pole, northwest, 47.07 feet
nail and washer in corner fence post, southwest, 46.52 feet
nail and washer in power pole, southeast, 59.23 feet
north end concrete culvert, east, 29.96 feet

In December 1984, the DNR Bureau of Engineering traversed to the area of the corner and found a 14 inch by 14 inch by 12 inch stone with an "x" on the top flush with ground over a 15 inch by 15 inch by 12 inch stone down 12 inches at natural ground. Stones were 1.5 feet west of the center line of a north-south road and 1.0 foot south of the center line of a road west. Replaced top stone with a DNR Survey Marker.

Accept the stones as the location of the corner.

Traverse information is available from the DNR Bureau of Engineering.

recl8/missu2